

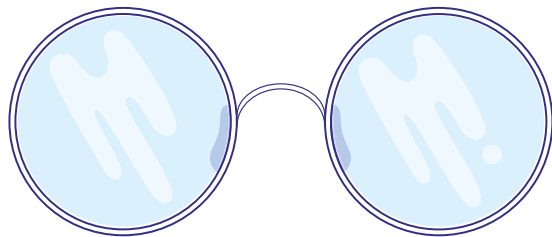


DENTA & OPTIPLUS
OPTIONAL COVERAGE



1

Dental care benefits



2

Visual aid benefits

1

Dental care benefits



**Your teeth are precious.
Take good care of them!**

Dental care

Dental care coverage up to an annual maximum of €1,000 per member.

For a complete list of treatments covered, see the Statutes 2020 brochure on www.cmcm.lu -> section "Publications".

The CMCM also contributes to the costs of:

- Composite filling (€125/year / member);
- Pulpectomy treatment (€50/year / member).

Periodontal treatment

Coverage of periodontal treatment services up to an annual maximum of €400 per member.

For a complete list of treatments covered, see the Statutes 2020 brochure on www.cmcm.lu -> section "Publications".



Orthodontics < age 17

Coverage of orthodontic costs for DT41 - DT45 treatments up to a maximum of €400.

Rate	AMOUNT INVOICED	REIMBURSEMENT		
		Sickness insurance fund	Régime Commun	Denta & Optiplus
DT41	€1,070	€446.40	€89.28	€400
DT42	€1,069	€446.10	€89.22	€400
DT43	€1,207	€560.90	€112.18	€400
DT44	€1,140	€505.50	€101.10	€400
DT45	€1,140	€505.20	€101.04	€400
	€5,626	€2,464.10	€492.82	€2,000

Example:

Total CMCM reimbursement per child (RÉGIME COMMUN + DENTA & OPTIPLUS):

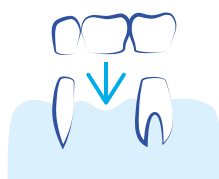
$$€492.82 + €2,000 = €2,492.82$$

Orthodontics > age 17

One-time payment of €1,000 per member for orthodontic treatment.

Dental prostheses

Coverage of dental prostheses up to an annual maximum of €2,500 per member.



Fixed dental prostheses

Crown, Pivot tooth, Bridge element, Telescopic crown	€400
Inlay, Reconstruction on inlay-pivot, Hinge	€150

Removeable dental prostheses

Skeletal base in metal	€400
Resin base plate, reinforced or cast	€150
Hook, Attachment	€100

Dental implants

Coverage for dental implants up to a maximum of €350 per implant with an annual maximum of €1,400 per member.

	CODE	AMOUNT INVOICED	REIMBURSEMENT		
			Sickness insurance fund	Régime commun	Denta & Optiplus
Implants	2	€1,900	-	€300	€700

Example:

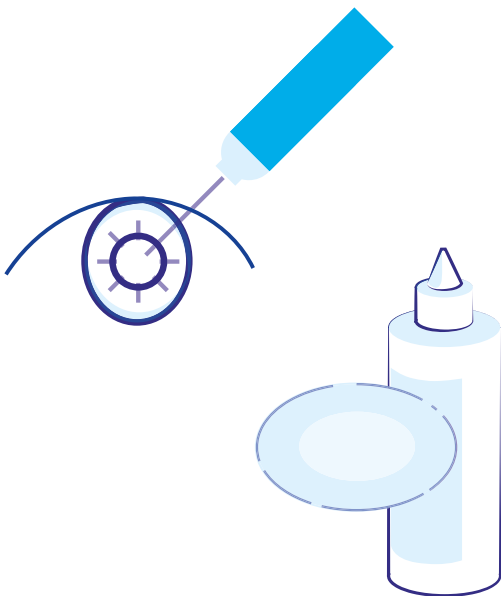
Total CMCM reimbursement (RÉGIME COMMUN + DENTA & OPTIPLUS):

$$€300 + €700 = €1,000$$

Note that the benefits for dental implants combined with those for dental prostheses may not exceed the annual maximum of €2,500.

2

Visual Aid Benefits



Participation in visual care costs

Corrective lenses

Participation in the costs of corrective lenses up to an annual maximum of €150 per member.

Frames

Participation in the costs of frames up to a maximum of €30 per calendar year.

Lenses

Participation in the cost of lenses up to an annual maximum of €100 per member.

Refractive surgery

Participation in uncovered medical costs for refractive surgery treatment up to a maximum amount of €1,000 per eye.